

INCWADI YOLWAZI OLUYISENDLALELO

**YOKUHLOLWA OKUYISISEKELO (BA),
UHLELO LOKULAWULWA KOKULUNGISA KANYE
NELAYISENSI YOKUSETSHENZISWA KWAMANZI
EKWAKHIWENI KWENTAMBO KAGESI
YESIKHASHANA IMPALA ZIRCON TEMPORARY BY-
PASS 132KV POWERLINE KANYE
NENGQALASIZINDA EHLOBENE NAYO KANYE
NOKULUNGISWA KWENTAMBO KAGESI
EYINHLOKO IMPALA ZIRCON 132KV MAIN
POWERLINE EKHONA KUMASIPALA
WASEMHLATHUZE
ESIFUNDAZWENI SAKWAZULU-NATALI**

UMFAKI SICELO



ABAHLAZIYI BEZEMVELO



Ithebula Lokuqukethwe

1. INJONGO YALE NCWADI	3
2. ISETHULO NESENDLALELO SEPHROJEKTHI	3
3. INDAWO YEPHROJEKTHI	4
4. UKUHLOLWA OKUYISEKELO, UHLELO LOKULAWULWA KOKULUNGISA NESICELO SELAYISENSI YOKUSETSHENZISWA KWAMANZI	7
4.1 Yini Ukuhlolwa Okuyisisekelo?	7
4.2 Luyini Uhlelo Lokulawulwa Kokulungisa?	9
4.3 Siyini Isicelo Selayisensi Yokusetshenziswa Kwamanzi?	10
5. IMISEBENZI ESOHLWINI NGOKUVUMELANA NEZIQONDISO ZE-EIA, ZIKA-2014 NJENGOBA ZICHITSHIYELWE, NE-NWA (UMTHETHO 36 KA-1998)	12
6. INQUBO YOKUBAMBA IQHAZA KOMPHAKATHI.....	12
6.1 Izimvo zakho zibalulekile.	13
6.2 Indlela yokubamba iqhaza	13
6.3 Isinyathelo Esilandelayo.....	14

Uhlu Lwemifanekiso

UMfanekiso 1 : Ibalazwe Lendawo	6
UMfanekiso 2: Inqubo Yokuhlola Okuyisisekelo	8
UMfanekiso 2: Inqubo Yokubamba Iqhaza Komphakathi yoKuhlolwa Okuyisisekelo	9
UMfanekiso 3: UHlelo Lokulawulwa Kokulungisa	10
UMfanekiso 4: Inqubo Yelayisensi Yokusetshenziswa Kwamanzi	11

Uhlu Lwamathebula

Ithebula 1: Ulwazi Lwendawo Yephrojekthi	4
Ithebula 2: Imisebenzi Esohlwini Eqaliswa Yilokhu Okuhlongozwayo.....	12

1. INJONGO YALE NCWADI

Injongo yale Ncwadi Yolwazi Oluyisendlalelo (BID) ukunikeza ulwazi kwaBanesasasa kanye/noma Abathintekayo (ama-I&AP) mayelana noKuhlolwa Okuyisisekelo, uHlelo Lokulawulwa Kokulungisa kanye neSicelo Selayisensi Yokusetshenziswa Kwamanzi yokwakhiwa okuhlongozwayo kwentambo kagesi yesikhashana Impala Zircon Temporary By-Pass 132kV Powerline kanye nengqalasizinda ehlobene nayo kanye nokulungiswa kwentambo kagesi eyinhloko ekhona Impala Zircon 132kV kuMasipala Wendawo Umhlathuze eSifundazweni saKwa-Zulu Natali, eNingizimu Afrika.

Le Ncwadi Yolwazi Oluyisendlalelo (BID) ihlose nokuchaza iNqubo Yokubamba Iqhaza Komphakathi (PPP) echazwe yiZiqondiso Zokuhlolwa Komthelela Kwezemvelo (EIA), zika-2014 njengoba zichitshiyelwe futhi zishicilelwe ngaphansi koMthetho Wokulawulwa Kwezemvelo Kuzwelonke, ka-1998 (i-NEMA) (UMthetho No. 107 ka-1998) , noMthetho Wamanzi Kuzwelonke, ka-1998 (NWA) (UMthetho 36 ka-1998), omema bonke aBanesasasa Nabathintekayo (I&APs) ukuba baveze uvo lwabo nezinto ezibakhathazayo ezihlobene nale phrojekthi.

Okokugcina, le BID inikeza nama-I&AP ithuba:

- Lokubhalisa ngokufanele njengaBanesasasa Nabathintekayo kwinqubo yokubamba iqhaza komphakathi.
- Lokuqonda inqubo yoKuhlola Okuyisisekelo, uHlelo Lokulawulwa Kokulungisa, neSicelo Selayisensi Yokusetshenziswa kwamanzi ukuze babambe iqhaza ngempumelelo.
- Baveze izinto ezibakhathazayo kanye/noma bathumele ukusikisela kokuthuthukisa iphrojekthi ehlongozwayo, futhi
- Babe neqhaza olwazini lwendawo.

2. ISETHULO NESENDLALELO SEPHROJEKTHI

Umfaki sicelo (u-Eskom) uhlose uKulungisa Nokuthuthukisa intambo kagesi Impala Zircon 132kV esEmpangeni, ngaphansi kwe-Richards Bay. Intambo kagesi ekhona ingaba cishe u-10,582 km ubude, kodwa u-Eskom unakekela cishe ibanga elingu-7.6km kuphela lale ntambo; ingxenye esele ngakaMasipala Wendawo uMhlathuze. Intambo kagesi Impala Zircon 132kV ingulayini ohambisa ugesi uye ohlangothini oluludwa, ongeke ukwazi ukuwubuyisela emuva futhi iphakela ugesi kumakhasimende alinganiselwa ku-6062. Iphakela i-Cygnus Substation, yona ephakela zonke iziteshi zasEsikhawini, uMasipala Wendawo uMhlathuze nephampu yamanzi ku-Lake Qube (LPU).

Intambo kagesi engu-10km isuka ogwini oluseNyakatho KwaZulu-Natali futhi ichayeke ekutholeni ukungcola kwasezimbonini nokwasogwini. Ngakho-ke, ngenxa yokuthi iseduze nogu, le ntambo kagesi iyagqwala kakhulu futhi kuwohloka nezisekelo zezinqaba. Ngakho-ke, kudingeka intambo kagesi yesikhashana ukuze kuqhutshekwe noKulungiswa kwentambo kagesi eyinhloko.

Intambo kagesi yesikhashana ehlongozwayo i-132kV izoba cishe u-6.01 km ubude futhi izokwakhelwa ezigxotsheni zokhuni okwesikhashana, okuzokwenza sikwazi uKulungisa intambo kagesi eyinhloko. Intambo kagesi yesikhashana izosetshenziswa cishe iminyaka engu-3. Intambo kagesi yesikhashana (kanye nendlela enelungelo layo) izohambisana nentambo kagesi eyiNhloko (zizoqhelelana cishe ngo-15m) zinqamule uMfula uMhlathuze, ingxenye enkulu yezintambo zikagesi idlula epulazini lomoba.

I-Selahle Consultancy and Projects (Pty) Ltd (kamuva lapha okuthiwa i-SCP) iye yaqokwa njengoMhlaziyi Wezemvelo (ama-EAP) ukuba isingathe izinqubo ze-BA, MMP ne-WULA. Leli thimba liye lasingatha lesi siphakamiso ngokucophelela ekwenzeni ama-EIA kanye nazo zonke iZinsiza Zezemvelo ezihlobene nawo. I-SCP inethimba lochwepheshe abanamakhono nolwazi oludingekayo lokuyohlola endaweni okuzokwenziwa kuyo umsebenzi futhi bahlanganise imibiko ngezikhathi ezibekiwe.

Lokhu okuhlongozwayo kudinga isigunyazo ngaphansi kweZiqondiso Ze-EIA, zika-2014 (njengoba zichitshiyelwe) ezishicilelwe ngaphansi kwe-NEMA, kanye neSicelo Selayisensi Yokusetshenziswa Kwamanzi neZiqondiso Zokufakwa Kwezikhaziso, 2017 (ezichitshiyelwe) ezikhishwe ngaphansi koMthetho Wamanzi Kazwelonke (uMthetho 36 ka-1998) ukuqinisekisa ukuhambisana nomthetho neziqondiso zeZemvelo Nezamanzi. Amagunya Afanele abhekelele ukusebenza lezi zicelo yilawa:

- UMnyango Wezamahlathi, Ezokudoba Nezemvelo (DFFE) – weNqubo Yokuhlola Eyinhloko noHlelo Lokulawulwa Kokulungisa
- UMnyango Wezamanzi Nokuthuthwa Kwendle (DWS) – Isicelo Selayisensi Yokusetshenziswa Kwamanzi

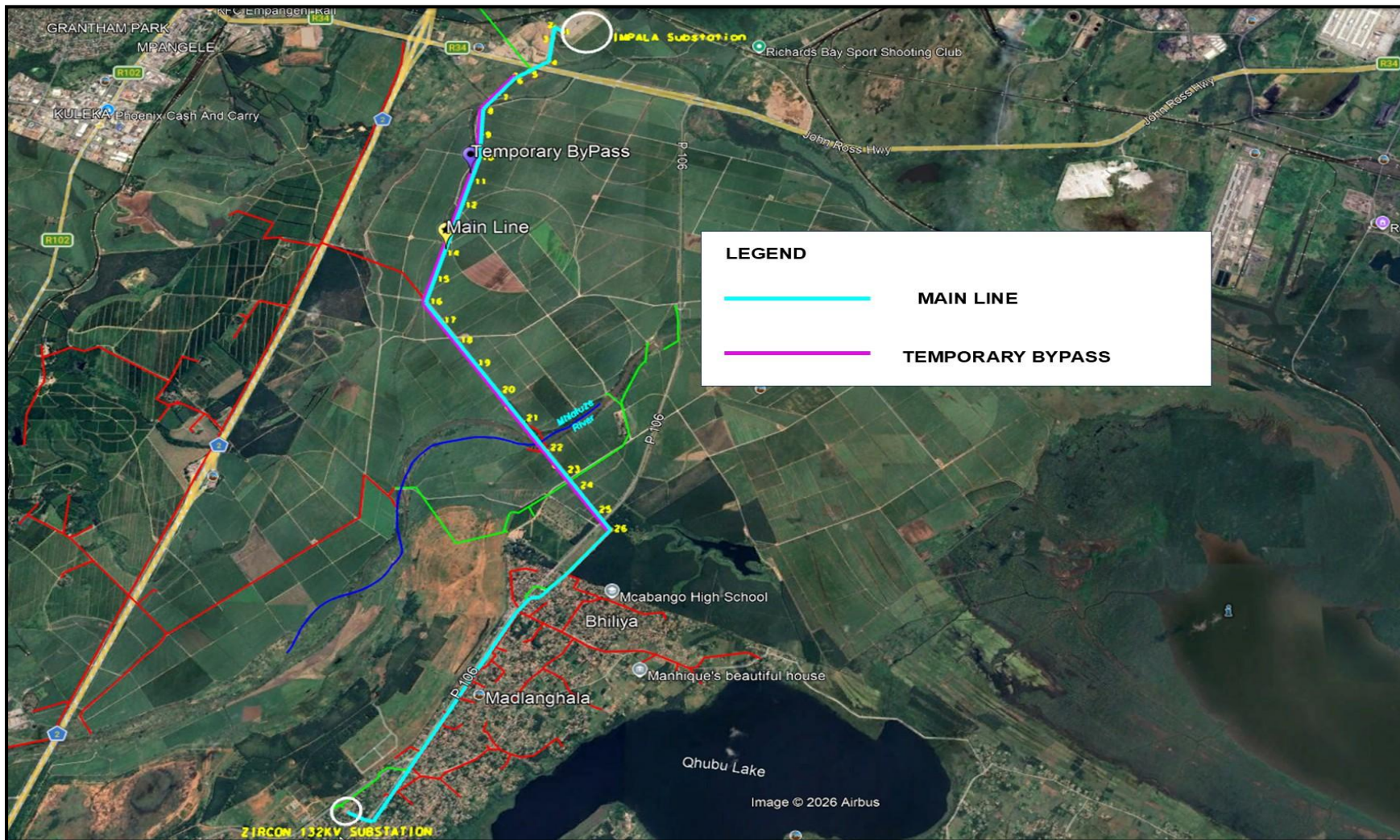
3. INDAWO YEPHROJEKTHI

Indlela eya kule ntambo yesikhashana nentambo kagesi eyinhloko ekhona ihamba emgwaqweni u-N2 no-R34. Ama-coordinates asesayithini yilawa:

Ithebula 2: Ulwazi Lwendawo Yephrojekthi

ULAYINI WESIKHASHANA OHLONGOZWAYO KANYE NOLAYINI OYINHLOKO	
Isifundazwe	Kwazulu-Natali
UMasipala Wendawo	UMasipala Wendawo Umhlathuze
Idolobhana Eliseduze	Empangeni, Richards Bay
INTAMBO KAGESI YESIKHASHANA	
Ama-co-ordinates	Lapho Iqala Khona- 28°49'10.68" S 31°57'08.14" E Phakathi Nendawo- 28°47'49.89" S 31°55'59.54" E

	Lapho iphela khona- 28°46'22.34" S 31°56'27.22" E
INTAMBO KAGESI EYINHLOKO	
Ama-co-ordinates	Lapho Iqala Khona- 28°50'43.00" S 31°55'49.28" E Phakathi Nendawo- 28°48'13.80" S 31°56'20.81" E Lapho iphela khona- 28°46'05.25" S 31°56'43.18" E



Umfanekiso

5:

Ibalazwe

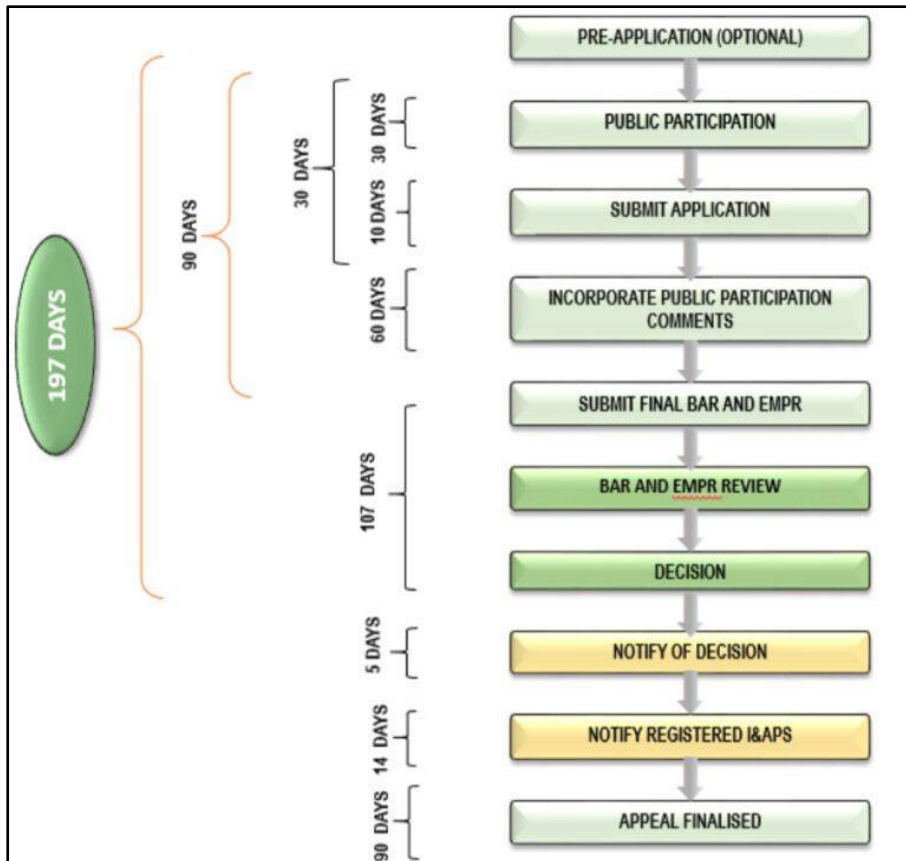
Lendawo

4. UKUHLOLWA OKUYISEKELO, UHLELO LOKULAWULWA KOKULUNGISA NESICELO SELAYISENSI YOKUSETSHENZISWA KWAMANZI

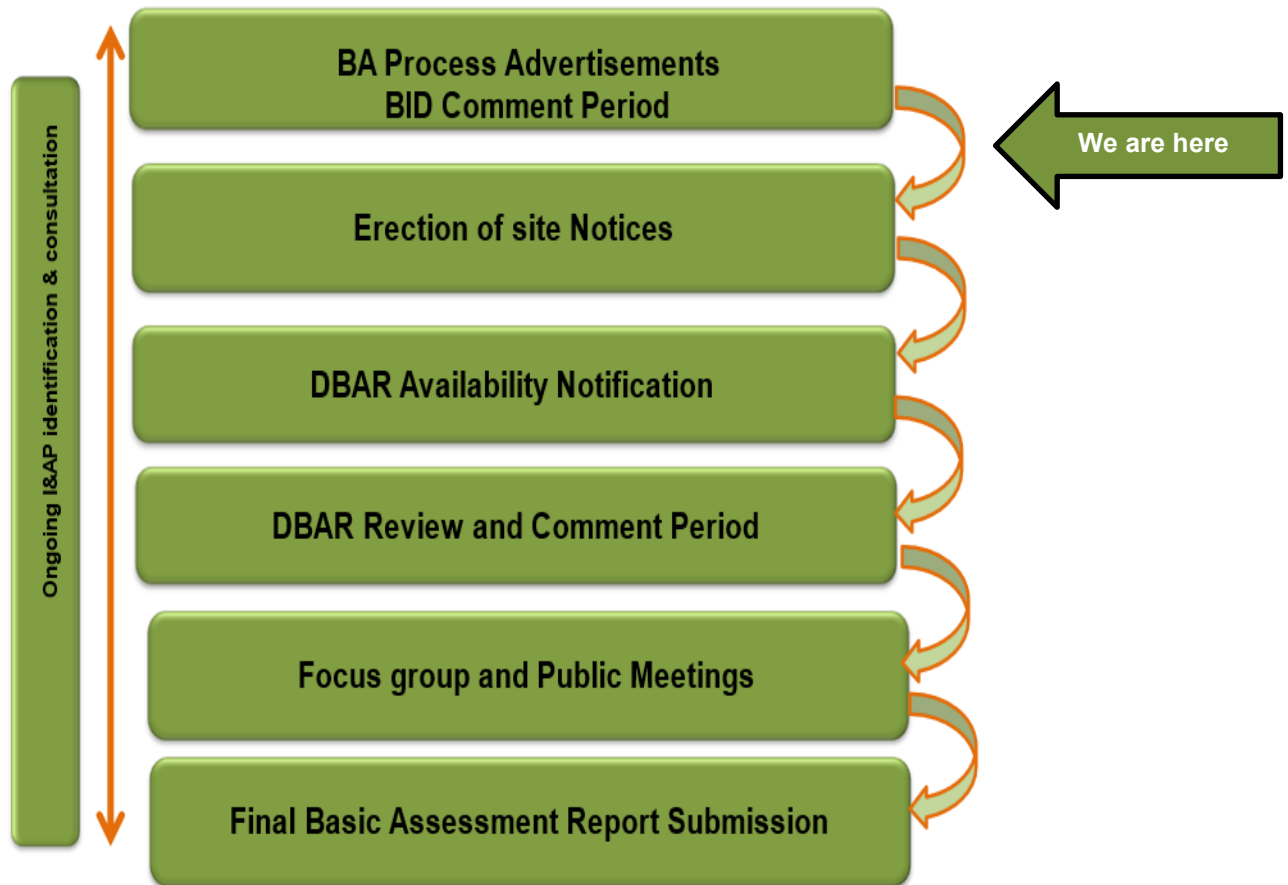
4.1 Yini Ukuhlolwa Okuyisisekelo?

Ukuhlolwa Okuyisisekelo ukuhlonzwa komthelela wezemvelo, ukuhlaziya nokudambisa imithelela okwenziwa ngaphansi kweZiqondiso ze-EIA, ezashicilelwa ngaphansi kwe-NEMA. Kusebenza emisebenzini ebalwe ngaphansi kweSaziso Sokusohlwini 1 kanye/noma no-3 salezi Ziqondiso, ezibhekwa njengezingase zibe nomthelela wezemvelo omncane kuya kophakathi nendawo. Ukuhlola Okuyisisekelo kwenziwa lapho imithelela inamathuba amancane okuba nemithelela emikhulu emvelweni.

Le nqubo ibandakanya ukulungiselelwa koMbiko Wokuhlolwa Okuyisisekelo (BAR), obeka uhlobo nesimo sento ehlongozwayo, uchaze izimo zemvelo ezikhona, uhlonze futhi uhlole imithelela engase ibe khona kwezemvelo, futhi uhlongoze izinyathelo zokudambisa leyo mithethelela. Kube sekwenziwa noHlelo Lokulawulwa Kokulungisa (EMPr) ukuze luqondise ukuqaliswa kwezinyathelo zokudambisa imithelela nokuqapha. Ukubamba iqhaza komphakathi kuyisici esiyinhloko senqubo yoKuhlola Okuyisisekelo, futhi ukubandakanyeka kwababambiqhaza kumelwe kubhalwe ku-BAR. Umbiko ophothuliwe ube usuthunyelwe emagunyeni afanele, kulokhu lelo gunya uMnyango Wezamahlathi, Ezokudoba Nezemvelo (DFFE), ukuze enze isinqumo. UMfanekiso 2 & 3 ibonisa iNqubo Yokuhlolwa Okuyisisekelo kanye Nenqubo Yokubamba Iqhaza Komphakathi ezizokwenziwa.



UMfanekiso 2: Inqubo Yokuhlola Okuyisisekelo



Umfanekiso 6: Inqubo Yokubamba Iqhaza Komphakathi yoKuhlolwa Okuyisisekelo

4.2 Luyini Uhlelo Lokulawulwa Kokulungisa?

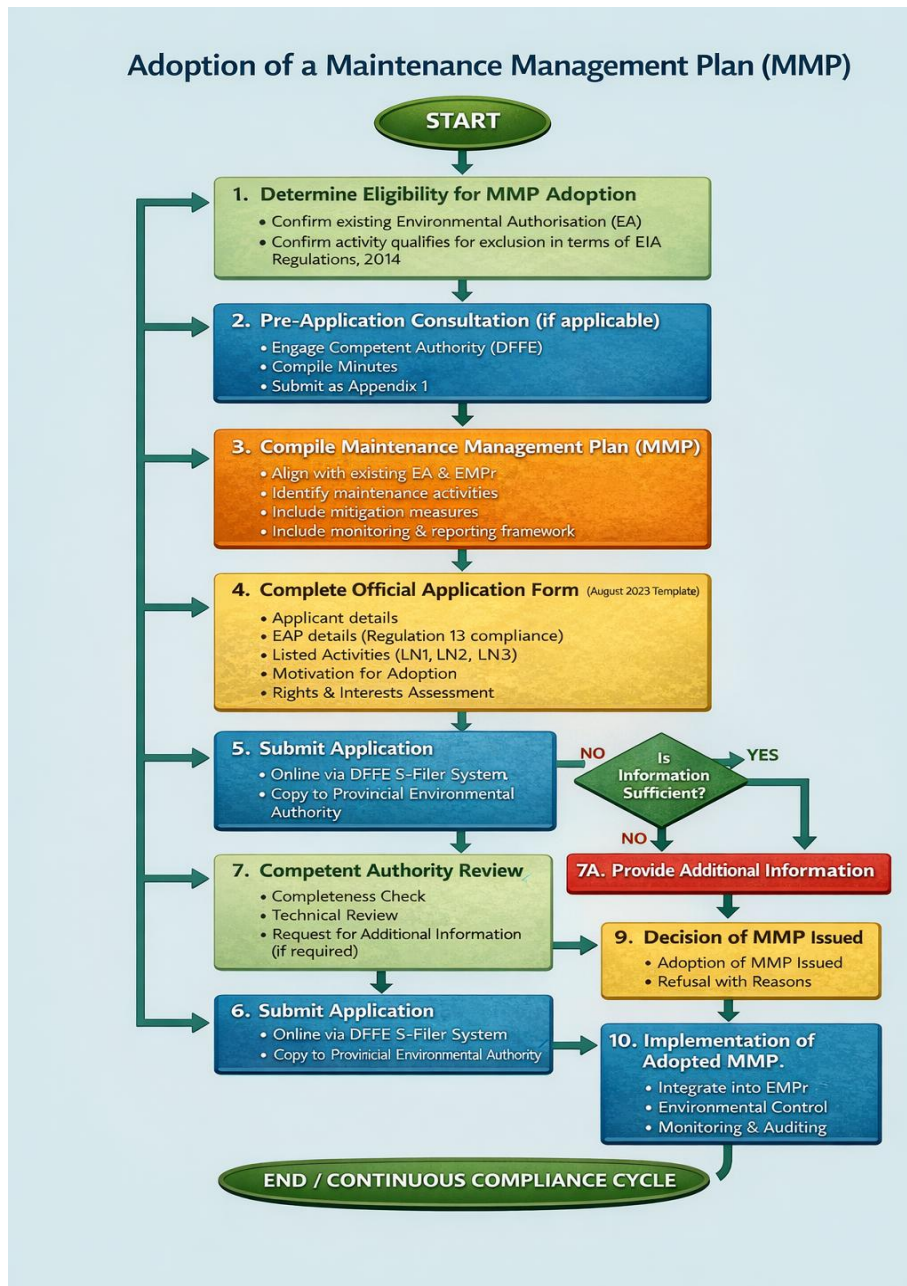
UHlelo Lokulawulwa Kokulungisa (i-MMP) uhlelo oluhlekile oluchaza indlela ingqalasizinda ezolungisa futhi ithuthukiswe ngayo. Luchaza izinqubo nezibopho zokulungisa ingqalasizinda ngendlela ephephile, ephumelelayo nengalimazi imveli

UHlelo Lokulawulwa Kokulungisa (MMP) lwakhiwa ngokuyinhloko ukuze luhlangabezane nezimfuneko zeSigaba 28 se-NEMA, ehlobene nesibopho sokunakekela nokulungisa. Ngaphezu kwalokho, i-MMP yenziwa ngokuvumelana nezindlela zokwenza izinto ezingcono kakhulu kwezemvelo nangokuvumelana neZiqondiso ze-EIA, zika-2014 (njengoba zichitshiyelwe) ezethulwe ngaphansi koMthetho Wokulawulwa Kwezemvelo Kuzwelonke, ka-1998 (uMthetho No. 107 ka-1998).

UHlelo Lokulawulwa Kokulungisa (MMP) luchaza izinyathelo zokudambisa imithelela futhi luhlonze abadlali bezindima eziqondile abazobhekelela ukuqaliswa kwezinyathelo zokudambisa imithelela, ukuze kuqinisekiswa ukuthi imithelela ekhona kwezemvelo iyancishiswa phakathi nazo zonke izigaba zokulungisa okuhlongozwayo.

Njengoba kushiwo ngaphambilini, lokhu okuhlongozwayo kunengxenywe yokulungisa nokuthuthukiswa kweNtambo Kagesi eyiNhlolo futhi lo msebenzi udinga ukuba igunya elifanele Lamukele uHlelo

Lokulawulwa Kokulungisa. UMfanekiso 4 ngezansi ubonisa inqubo eyolandelwa phakathi nenqubo yokwamukela:



UMfanekiso 7: UHlelo Lokulawulwa Kokulungisa

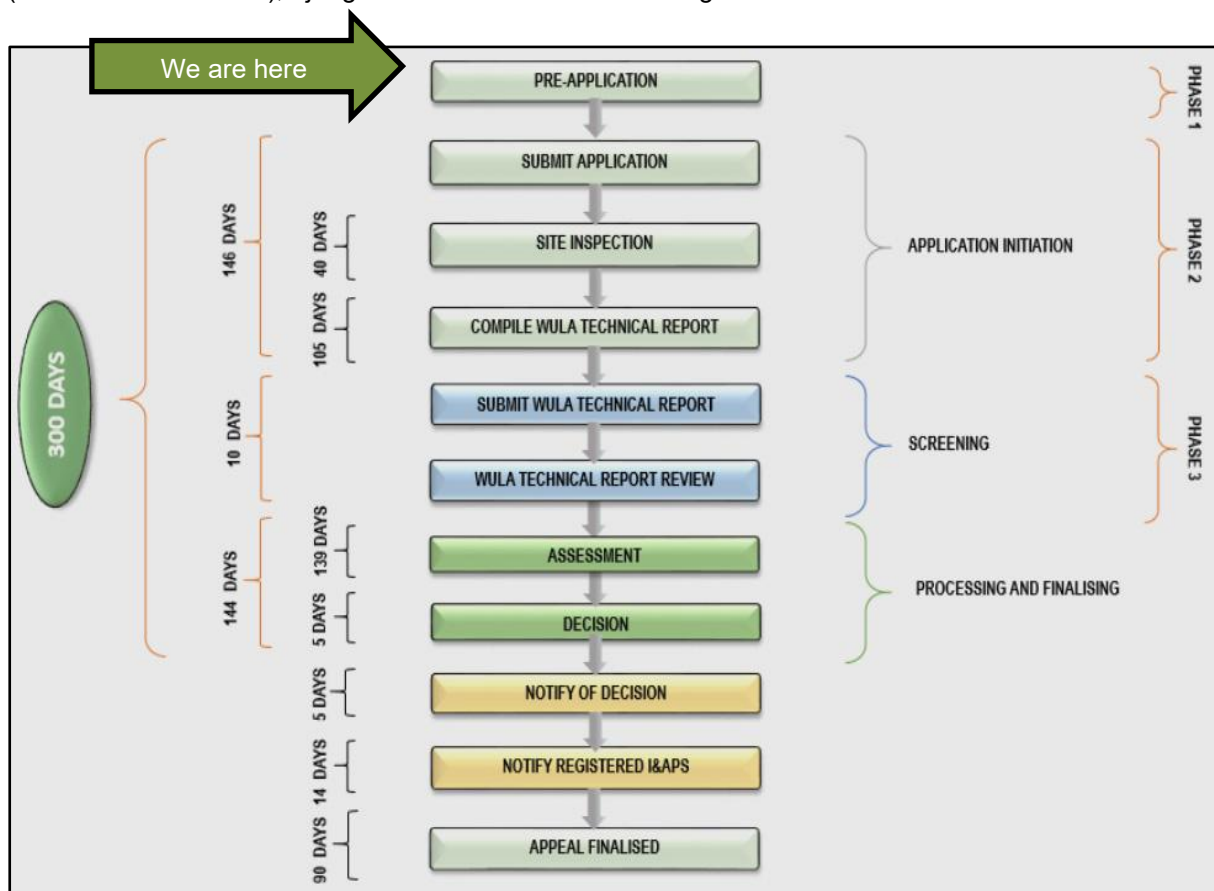
4.3 Siyini Isicelo Selayisensi Yokusetshenziswa Kwamanzi?

ISicelo Selayisensi Yokusetshenziswa Kwamanzi senziwa ngokuvumelana neZiqondiso Zesicelo Selayisensi Yokusetshenziswa Kwamanzi Nezikhalazo, zika-2017 (njengoba zichitshiyelwe), ezethulwe ngaphansi koMthetho Wamanzi Kazwelonke – NWA (uMthetho 36 ka-1998). I-NWA

yenzelwa ukuqinisekisa ukuvikelwa nokusetshenziswa ngendlela esimeme kweMithombo Yamanzi eNingizimu Afrika.

I-WULA iyadingeka uma umsebenzi ungaphansi kweSigaba 21 soMthetho Wamanzi Kazwelonke, ohlonza izindlela ezingu-11 ezihlukene zokusetshenziswa kwamanzi ezidinga isigunyazo. Lezi zihlanganisa ukuthatha amanzi emithonjeni efana nemifula, amadamu, noma imigonqozo; ukugcina amanzi ezindaweni ezithile zokuwagcina noma emadanyini; ukuvimba noma ukuchezukisa ukugeleza kwamanzi emzileni wawo; nokwenza imisebenzi enciphisa ukugeleza kwamanzi njengokutshala amahlathi amakhulu ezentengiso. Okunye ukusetshenziswa okulawulwayo kuhlangukisa imisebenzi elawulwayo njengokunisela ngamanzi angcolile, ukukhiphela imfucuza emthonjeni wamanzi, nokulahla imfucuza ngendlela ethinta imithombo noma izindawo zamanzi. Ngaphezu kwalokho, imisebenzi enjengokushintsha umsebe womfula noma indawo okugeleza kuyo amanzi, ukukhipha amanzi angaphansi komhlaba, nokusebenzisa amanzi ngezinjongo zezinto zokungcebeleka nakho kungase kudinge ilayisensi.

Ngakho-ke, le phrojekthi ehlongozwayo ibandakanya nokuvimba umsele/umfula noma ukuchezukisa ukugeleza kwamanzi Emfuleni kanye nokushintsha usebe lomfula noma indawo okugeleza kuyo amanzi, okuzokwenza kudingeke iSigaba 21 (a), (b), (c), (f) no-(i) soMthetho Wamanzi Kuzwelonke (uMthetho 36 ka-1998), njengoba wethulwa mhla ka-20th Agasti 1998.



UMfanekiso 8: Inqubo Yelayisensi Yokusetshenziswa Kwamanzi

5. IMISEBENZI ESOHLWINI NGOKUVUMELANA NEZIQONDISO ZE-EIA, ZIKA-2014 NJENGOBA ZICHITSHIYELWE, NE-NWA (UMTHETHO 36 KA-1998)

Ngokuvumelana neSigaba 24 soMthetho Wokulawulwa Kwezemvelo Kuzwelonke, ka-1998 (uMthetho No. 107 ka-1998), kunikezwe uhlaka olungokomthetho lokuqondiswa kwemisebenzi engase ibe nomthelela omkhulu kwezemvelo. Lolu hlaka luthi imisebenzi enjalo kumelwe ihlolwe futhi igunyazwe ngenqubo yoKuhlolwa Komthelela Kwezemvelo (EIA) ngaphambi kokuba iqale. Le misebenzi kubhekiselwe kuyo “njengemisebenzi esohlwini” futhi idinga iSigunyazo Sezemvelo (EA) egunyeni elifanele. Imisebenzi esohlwini ichazwe kabanzi kuZaziso ZikaHulumeni 327 (iSaziso Sohlu 1), 325 (iSaziso Sohlu 2), no-24 (iSaziso Sohlu 3).

Ngaphezu kwalokhu okungenhla, kusebenza neSigaba 41(1)(a) soMthetho Wamanzi Kuzwelonke, 1998 (uMthetho No. 36 ka-1998). Ngakho-ke, lokhu okuhlongozwayo kuqalisa imisebenzi esohlwini eminingana ngaphansi komthetho oshiwo ngenhla futhi iyohlolwa ngokufanele. Lapha ngezansi kubalwe imisebenzi esohlwini eqaliswayo ngenxa yalokhu okuhlongozwayo.

Ithebula 2: Imisebenzi Esohlwini Eqaliswa Yilokhu Okuhlongozwayo

Isicelo Esidingekayo	Isigunyazo Sezemvelo	Uhlelo Lokulawulwa Kokulungisa	Ilayisensi Yokusetshenziswa Kwamanzi
Igunya Elifanele	UMnyango Wezamahlathi, Ezokudoba Nezemvelo	UMnyango Wezamahlathi, Ezokudoba Nezemvelo	UMnyango Wezamanzi Nokuthuthwa Kwendla
Imisebenzi Eqaliswayo	Isaziso SikaHulumeni No. 327 sika-2017 (njengoba sichitshiyelwe)	Isaziso SikaHulumeni No. 324 sika-2017(njengoba sichitshiyelwe)	UMthetho Wamanzi Kazwelonke (uMthetho No. 36 ka-1998)
	ISaziso Sohlu 1: UMsebenzi 19	Isaziso Sohlu 3: uMsebenzi – 12 & noMsebenzi 14	ISigaba 21 (c) & (i)
	Isaziso SikaHulumeni No. 324 sika-2017 (njengoba sichitshiyelwe)		
	ISaziso Sohlu 3: UMsebenzi – 12 & noMsebenzi – 14		

6. INQUBO YOKUBAMBA IQHAZA KOMPHAKATHI

Inqubo yokubamba iqhaza komphakathi phakathi nesigaba se-BA, MMP & WULA iyokwenza ama-I&APs akwazi ukuba nethonya ezingcwaningweni zendlela yokwenza nokubuyekeza lokho okutholwe

yizingcwangingo ezizimele ezenziwayo. Amakhonsalithenti ezemvelo azoxhumana ngokuqondile nama-I&AP abhalisile ezigabeni ezihlukahlukene phakathi nale nqubo ukuze awazise ngokuqhubeka kocwangingo nesikhathi samathuba okubandakanyeka. Izinyathelo kwinqubo yokubamba iqhaza komphakathi zibekwe lapha ngezani:

- Izincwadi zesimemo zihambisana nale BID kanye nepheshana lokuveza uvo kuzonikezwa abanikazi bomhlaba oseduze nale ngo-500m nale ndawo ehlongozwa ukuthuthukiswa nabaseduze nendlela, abantu abaqavile nezinhlango, lezo zincwadi zibatshela ngale phrojekthi futhi zibamema ukuba baveze uvo lwabo.
- Ukufaka isikhangiso ephephandabeni lendawo (Zululand Observer) esimemezela le phrojekthi ehlongozwayo nokunikeza ithuba lokuveza uvo.
- Kuzobekwa izaziso zesayithi ezindaweni ezithile kule ndawo ngokuvumelana nezimfuneko zeZiqondiso, ukuze kumenyezwe le phrojekthi.
- Ababambiqhaza abayinhloko kule ndawo bayokwaziswa ngocingo, nge-imeyili noma ifeksi.
- Zonke izinkinga ezitholakele kubabambiqhaza zizofakwa eMbikweni Wezimvo Nokuphendula (Comments and Response Report [CRR]), ozosetshenziselwa ukuhlunga nokubeka eqhulwini izinkinga ezizohlolwa.

6.1 Izimvo zakho zibalulekile.

Izimvo zakho zizoqinisekisa ukuthi zonke izinkinga ezifanele ziyahlolwa esigabeni se-BA, MMP & WULA. Ucelwa ukuba ugcwalise ifomu lokubhalisa elifakiwe kanye nepheshana lezimvo. Sebenzisa imininingwane yokuxhumana engezansi kule dokhumenti ukuze unikeze noma yikuphi ukuphawula noma uveze noma yiziphi izinkinga.

6.2 Indlela yokubamba iqhaza

- Phendula (ngocingo noma nge-imeyili) esimemweni sethu sokubamba iqhaza kwakho, esikhangiswe ezintweni eziprintiwe.
- Thumela nge-WhatsApp, ngefeksi noma nge-imeyili leli Fomu Lokubhalisa Nokuphawula elifakwe lapha ulithumele ku-Selahle CP.
- Xhumana nathi ngocingo uma unenkinga, ukuphawula noma udinga ulwazi olwengeziwe ngale phrojekthi.
- Ukuze uthole ulwazi olwengeziwe mayelana nale phrojekthi, skena i-QR code engezansi.

Ngokugcwalisa nokuthumela leli fomu lokubhalisa nokuphawula elihambisana naleli, uzibhalisa ngokuzenzakalelayo njenge-I&AP yale phrojekthi ehlongozwayo, uqinisekisa ukuthi izimvo kanye/noma ukukhathazeka kwakho kuyavezwa mayelana nale phrojekthi futhi kuzophawulwa. Amakhonsalithenti okubamba iqhaza komphakathi azophendula zonke izimvo nezinkinga ezitholakele phakathi nale phrojekthi:

Selahle Consultancy & Projects Pty Ltd

Umuntu okuxhunyanwa naye: Sinnah Mhlongo / Botlhale Phiri

Ino. Yocingo : 011 026 2560

Ino. Yeselula : 079 569 5277

Ino. Ye-WhatsApp : 079 569 5277

Ino. Yefeksi : 086 532 0398

I-imeyili : ppp@scprojects.co.za



6.3 Isinyathelo Esilandelayo

Abanesasasa Nabathintekayo kufanele babhalise ngaphambi noma ngoLwesibili, 7 Ephreli 2026, esigabeni sokuqala sokubandakanyeka kwaBabambiqhaza ukuze baveze izinkinga mayelana nale phrojekthi ehlongozwayo. Isinyathelo esilandelayo ukukhipha uhlaka loMbiko we-BA ne-MMP, ozochaza kabanzi ngale phrojekthi, izimo eziyisisekelo nendawo ethintekayo, kanye nezinkinga eziphakanyisiwe. Uzochaza nokuthi umbiko uzozisingatha kanjani lezo zinkinga eziphakanyisiwe. Amakhophi ombiko azobekwe ezindaweni zomphakathi ukuze abuyekwezwe. Ama-I&AP abhalisiwe azokwaziswa ukuthi azowubuyekeza kuphi umbiko futhi azonikezwa izinsuku ezingu-30 ukuze aphawule ngombiko.

Ulwazi mayelana noMhlangano Womphakathi noKubuyekwezwa koHlaka Lombiko Wokuhlola Oyisisekelo noHlaka loHlelo Lokulawulwa Kokulungisa kuzotholakala ngokushesha. Uma ufisa ukuphakamisa noma yiziphi izinkinga noma ukukhathazeka kokuqala mayelana nale phrojekthi ehlongozwayo, noma uma ufisa ukubhalisa njenge-I&AP, sicela uthinte ihhovisi Lokubamba lqhaza Komphakathi njengoba kunikezwe imininingwane lapha ngenhla.